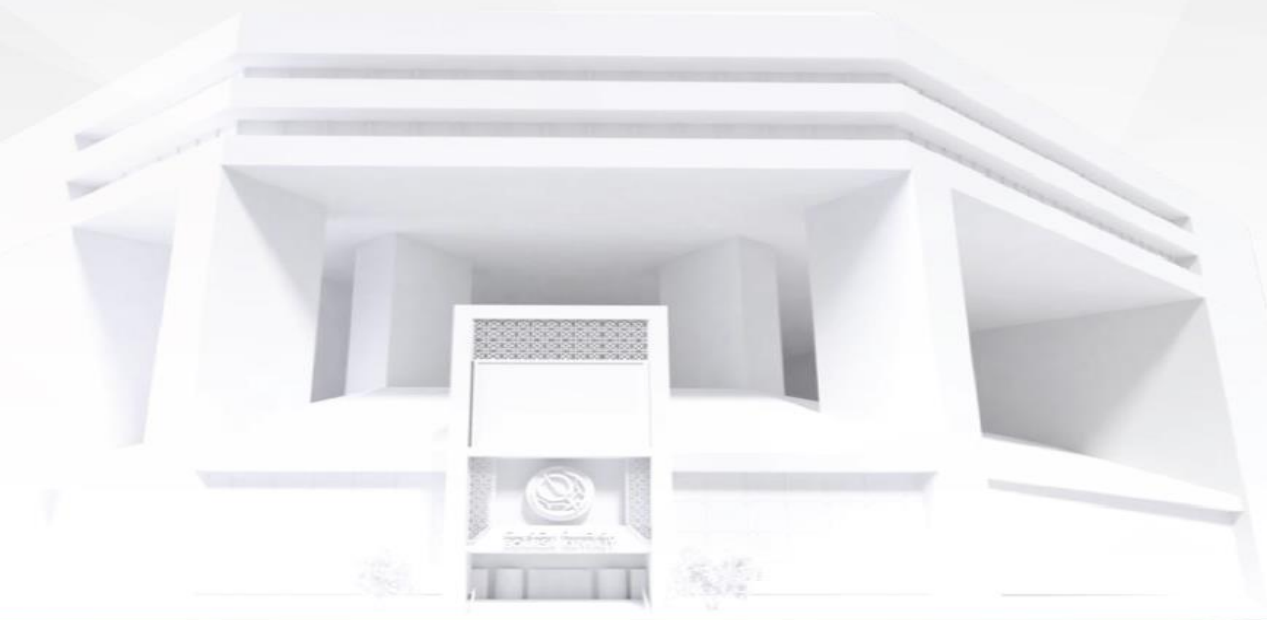




شركة الاستثمار الوطنية
NATIONAL INVESTMENTS COMPANY

Bursa Kuwait – Daily Market Report MENA Securities – Research & Studies Dep.

13th October 2022



www.nic.com.kw

DAILY MARKET COVERAGE REPORT

NIC MENA SECURITIES - RESEARCH AND STUDIES DEP



Kuwait Market Watch

Thursday, October 13, 2022

Index	Close	DTD Chg Net	DTD (%)	YTD (%)	52W High	52W Low	MKT CAP Bn (KD)	PBV (X)	PE (X)	DY (%)
All Share Index	6,987.23	-27.23	-0.39%	-0.79%	8,472.15	6,788.83	44.67	1.98	30.57	4.11
Premier Index	7,827.21	-23.70	-0.30%	2.46%	9,437.37	7,343.90	35.93	2.18	31.45	4.52
Main Index	5,222.22	-39.00	-0.74%	-11.28%	6,600.62	5,190.37	8.74	1.16	26.92	2.43
NIC 50 Index	8,762.77	-29.17	-0.33%	2.82%	10,553.82	8,195.69	35.23	2.18	31.45	4.52

Index	Value Mn(KD)	Volume (Mn share)
All Share Index	37.91	120.59
Premier Index	32.98	66.03
Main Index	4.93	54.56
NIC 50 Index	35.05	94.65

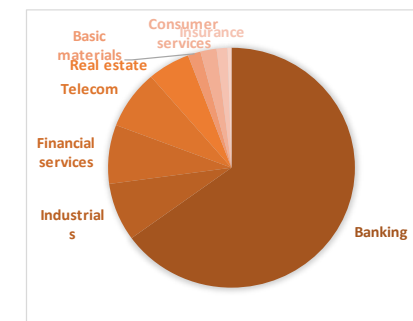
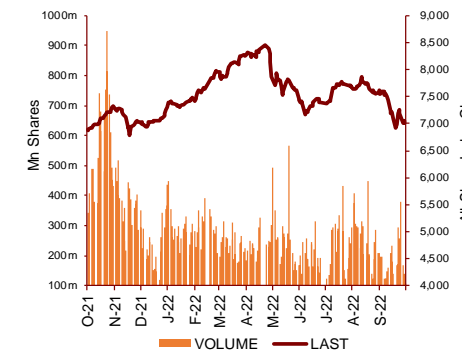
Today's Top 5 Gainer %	Close KD	Value KD	DTD (%)
Kuwait Real Estate Holding	0.036	0.362	9.70%
Sanam Real Estate	0.064	250	9.40%
Hayat Communications	0.064	1,839	8.47%
Automated Systems	0.078	4,756.874	5.26%
National Industries	0.200	80.792	5.26%

Today's Top 5 by Value	Close KD	Trade Val Mn(KD)	DTD (%)
Kuwait Finance House	0.772	11.50	-0.77%
Gulf Bank	0.320	4.80	1.59%
National Bank of Kuwait	1.020	4.07	0.10%
Agility Public Warehousing	0.669	3.93	-0.30%
Mobile Telecommunications	0.580	1.22	0.00%

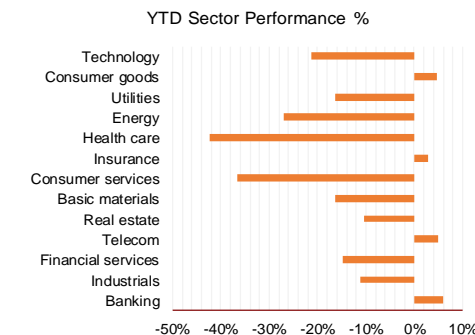
Market Breadth	UP	Down	No Chg
All Share Index	50	56	47
Premier Index	9	15	2
Main Index	41	41	45
NIC 50 Index	16	29	5

Today's Top 5 Loser %	Close KD	Value KD	DTD (%)
Al Massaleh Real Estate	0.033	20,642	-17.54%
Educational Holding Group	2.462	89,657	-16.54%
Al-Enmaa Real Estate	0.057	87,812	-9.44%
Salbookh Trading	0.017	217	-7.61%
Credit Rating and Collector	0.015	30	-5.00%

Top 5 by Volume	Close KD	Trade Vol Mn(Shrs)	DTD (%)
Gulf Bank	0.320	15.15	1.59%
Kuwait Finance House	0.772	14.82	-0.77%
GFH Financial Group	0.074	6.74	-1.87%
Commercial Real Estate	0.100	6.20	0.81%
Jiyad Holding	0.024	6.07	0.42%



Sector	Close	DTD Chg Net	DTD (%)	YTD (%)	52W High	52W Low	MKT CAP Bn (KD)	PBV (X)	PE (X)	DY (%)
Banking	1,714.01	-7.780	-0.45%	6.1%	1,992.2	1,557.8	28.671	1.59	24.09	1.91
Industrials	1,010.08	-3.960	-0.39%	-11.2%	1,443.6	976.3	3.450	0.97	19.27	3.88
Financial services	1,216.51	3.870	0.32%	-14.8%	1,678.3	1,190.4	3.499	0.97	29.69	3.07
Telecom	1,142.65	-1.330	-0.12%	5.0%	1,514.7	1,055.9	3.496	1.30	13.03	3.05
Real estate	1,176.94	-12.990	-1.09%	-10.3%	1,438.0	1,155.8	2.458	0.68	35.16	1.36
Basic materials	849.36	-6.860	-0.80%	-16.4%	1,233.3	846.0	0.740	1.22	8.98	6.24
Consumer services	455.68	-6.860	-1.48%	-36.7%	791.7	449.8	0.930	2.27	27.57	1.76
Insurance	1,574.36	-2.560	-0.16%	2.8%	1,675.7	1,434.5	0.627	0.84	45.84	5.16
Health care	459.73	0.000	0.00%	-42.3%	821.7	420.4	0.228	15.73	12.57	0.96
Energy	1,022.07	-19.920	-1.91%	-27.0%	1,592.9	975.7	0.207	0.80	21.01	2.34
Utilities	500.00	-2.630	-0.52%	-16.2%	650.0	497.4	0.209	2.14	14.55	9.42
Consumer goods	1,404.82	5.030	0.36%	4.7%	1,641.0	1,134.0	0.138	0.90	37.30	2.12
Technology	567.45	28.370	5.26%	-21.2%	843.9	539.1	0.008	0.69	NM	-
	6,987.23	-27.23	-0.39%	-0.8%	8,472.2	6,788.8	44.67	1.98	30.57	4.11



DAILY MARKET COVERAGE REPORT

NIC MENA SECURITIES - RESEARCH AND STUDIES DEP



Premier Market

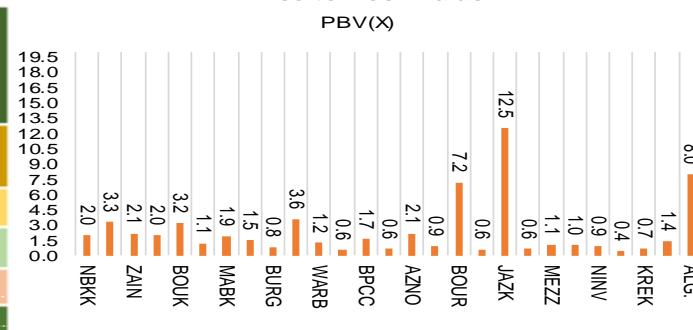
Thursday, October 13, 2022

Premier Market	Price			Valuation Multiples			MKT Cap	Price Performance		Trading Indicators		ROE	ROA	52 Week (KD)		MKT Cap
	Close (KD)	Day Δ	Day % Δ	PBV(X)	PE(X)	DY%	Mn KD	MTD(%)	YTD (%)	Value (Mn KD)	(Mn Shrs)	(%)	(%)	High	Low	%
National Bank of Kuwait	1.020	0.001	0.10%	1.98	18.44	2.38	7,703	5%	7%	4.07	3.99	10.9%	1.4%	1.104	0.898	21.44%
Kuwait Finance House	0.772	-0.006	-0.77%	3.31	26.21	1.40	10,215	-8%	2%	11.50	14.82	12.8%	1.6%	1.039	0.720	28.43%
Mobile Telecommunications	0.580	0.000	0.00%	2.11	13.71	5.69	2,510	-1%	-3%	1.22	2.10	15.6%	4.3%	0.698	0.564	6.99%
Ahli United Bank BSC	0.305	0.000	0.00%	2.04	17.93	2.72	3,400	0%	21%	0.00	0.00	11.3%	1.6%	0.336	0.240	9.46%
Boubyan Bank	0.796	-0.009	-1.12%	3.21	52.47	0.56	2,976	4%	12%	0.51	0.63	6.7%	0.8%	0.965	0.681	8.28%
Agility Public Warehousing	0.669	-0.002	-0.30%	1.14	51.38	2.48	1,690	0%	-15%	3.93	5.82	2.7%	2.2%	1.062	0.634	4.70%
Mabaneer Co.	0.840	-0.009	-1.06%	1.92	17.77	1.56	1,043	-3%	12%	0.53	0.63	11.2%	5.4%	0.910	0.715	2.90%
Gulf Bank	0.320	0.005	1.59%	1.50	18.11	2.12	1,013	7%	20%	4.80	15.15	8.5%	0.8%	0.385	0.226	2.82%
Burgan Bank	0.217	0.001	0.46%	0.80	18.37	2.20	712	-2%	-9%	0.18	0.81	4.3%	0.7%	0.307	0.205	1.98%
Human Soft Holding	3.260	-0.037	-1.12%	3.60	7.53	12.13	397	0%	1%	0.60	0.18	48.7%	39.9%	3.704	3.006	1.10%
Warba Bank	0.224	0.001	0.45%	1.22	26.54	0.00	448	1%	-18%	0.58	2.57	4.8%	0.6%	0.298	0.216	1.25%
Qurain Petrochemical Industries	0.242	-0.008	-3.20%	0.60	9.26	7.20	260	-11%	-30%	0.04	0.18	6.4%	5.2%	0.403	0.240	0.72%
Boubyan Petrochemical	0.805	0.005	0.63%	1.65	9.11	7.50	420	-3%	-6%	0.12	0.14	19.1%	10.1%	1.125	0.769	1.17%
Kuwait Projects Company Holding	0.119	0.002	1.71%	0.63	305.13	4.27	291	-11%	-16%	0.11	0.90	0.2%	0.1%	0.215	0.115	0.81%
Shamal Az-Zour Al-Oula Power & Water	0.190	-0.001	-0.52%	2.14	14.55	9.42	209	-3%	-17%	0.07	0.37	19.1%	2.9%	0.247	0.189	0.58%
National Industries Group Holding	0.216	0.001	0.47%	0.91	4.97	5.17	466	-6%	-10%	0.44	2.02	15.2%	6.5%	0.314	0.205	1.30%
Boursa Kuwait Securities Co	2.088	-0.012	-0.57%	7.19	22.33	3.10	419	0%	3%	0.46	0.22	33.9%	22.2%	2.870	1.800	1.17%
Kuwait International Bank	0.195	-0.004	-2.01%	0.61	31.00	1.93	207	-2%	-7%	0.50	2.56	1.9%	0.4%	0.259	0.192	0.58%
Jazeera Airways	1.732	-0.006	-0.35%	12.52	14.00	2.65	381	5%	34%	0.28	0.16	164.8%	12.1%	2.099	0.860	1.06%
Alafco Aviation Lease and Finance	0.173	-0.001	-0.57%	0.64	NM	0.00	165	-1%	-21%	0.13	0.77	-15.9%	-3.4%	0.256	0.167	0.46%
Mezzan Holding	0.364	-0.006	-1.62%	1.07	37.30	4.24	113	-3%	-37%	0.42	1.14	2.8%	1.3%	0.631	0.358	0.32%
Gulf Cable and Electrical Industries	1.124	0.006	0.54%	1.04	10.42	5.37	234	5%	29%	0.15	0.13	11.0%	NM	1.850	0.835	0.65%
National Investments	0.230	0.006	2.68%	0.91	8.60	20.09	184	0%	5%	0.63	2.76	10.9%	8.9%	0.475	0.196	0.51%
Alimtia Investment Group	0.074	-0.001	-0.94%	0.43	NM	12.13	75	-3%	-38%	0.01	0.12	-1.0%	-0.1%	0.140	0.069	0.21%
Kuwait Real Estate	0.100	0.000	-0.20%	0.73	12.23	2.90	93	-1%	-42%	0.61	6.06	6.0%	2.5%	0.187	0.097	0.26%
Integrated Holding	0.348	-0.002	-0.57%	1.44	26.61	2.86	88	-8%	-6%	0.25	0.71	5.4%	3.4%	0.478	0.342	0.25%
LI ALGanim	0.790	0.008	1.02%	7.95	12.39	0.00	219	1%	nm	0.86	1.09	27.8%	10.9%	0.966	0.750	0.61%
Total		-23.70	-0.30%	2.18	31.45	4.52	35,930	-1.5%	2.5%	32.98	64.95					100%

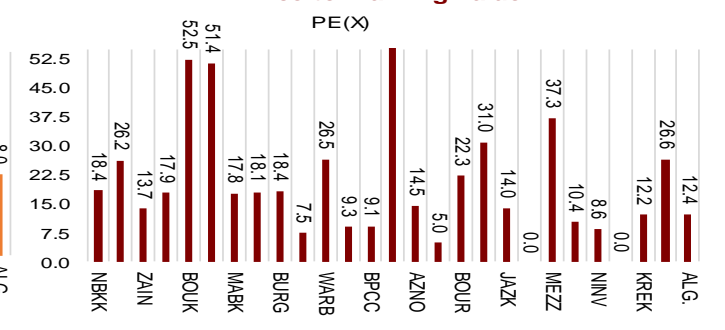
Market Capitalization



Price to Book Value



Price to Earning Value

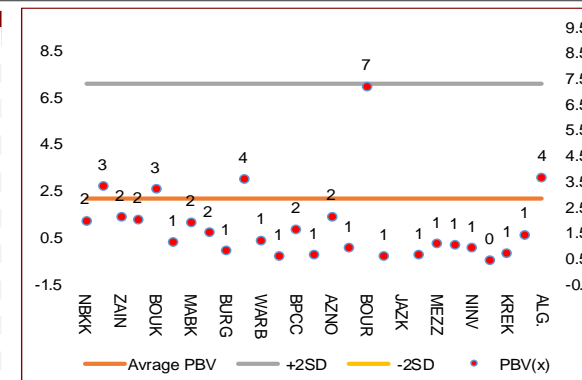


DAILY MARKET COVERAGE REPORT

NIC MENA SECURITIES - RESEARCH AND STUDIES DEP



Premier Market	Price			Valuation Multiples			MKT Cap	Price Performance		ROE	ROA
Company	Close (KD)	Day Δ	Day % Δ	PBV(X)	PE (X)	DY%	Mn KD	MTD(%)	YTD (%)	(%)	(%)
National Bank of Kuwait	1.020	0.001	0.10%	1.98	18.4	2.38	7,703	4.7%	7.4%	10.9%	1.4%
Kuwait Finance House	0.772	-0.006	-0.77%	3.31	26.2	1.40	10,215	-8.0%	2.1%	12.8%	1.6%
Mobile Telecommunications	0.580	0.000	0.00%	2.11	13.7	5.69	2,510	-0.9%	-2.5%	15.6%	4.3%
Ahli United Bank BSC	0.305	0.000	0.00%	2.04	17.9	2.72	3,400	0.0%	20.7%	11.3%	1.6%
Boubyan Bank	0.796	-0.009	-1.12%	3.21	52.5	0.56	2,976	4.3%	11.7%	6.7%	0.8%
Agility Public Warehousing	0.669	-0.002	-0.30%	1.14	51.4	2.48	1,690	0.4%	-15.0%	2.7%	2.2%
Mabaneer Co.	0.840	-0.009	-1.06%	1.92	17.8	1.56	1,043	-2.7%	12.3%	11.2%	5.4%
Gulf Bank	0.320	0.005	1.59%	1.50	18.1	2.12	1,013	6.7%	20.4%	8.5%	0.8%
Burgan Bank	0.217	0.001	0.46%	0.80	18.4	2.20	712	-2.3%	-9.2%	4.3%	0.7%
Human Soft Holding	3.260	-0.037	-1.12%	3.60	7.5	12.13	397	-0.5%	1.1%	48.7%	39.9%
Warba Bank	0.224	0.001	0.45%	1.22	26.5	0.00	448	1.4%	-18.2%	4.8%	0.6%
Qurain Petrochemical Industries	0.242	-0.008	-3.20%	0.60	9.3	7.20	260	-10.7%	-30.3%	6.4%	5.2%
Boubyan Petrochemical	0.805	0.005	0.63%	1.65	9.1	7.50	420	-3.0%	-5.5%	19.1%	10.1%
Kuwait Projects Company Holding	0.119	0.002	1.71%	0.63	305.1	4.27	291	-10.5%	-16.2%	0.2%	0.1%
Shamal Az-Zour Al-Oula Power & Water	0.190	-0.001	-0.52%	2.14	14.5	9.42	209	-2.6%	-16.7%	19.1%	2.9%
National Industries Group Holding	0.216	0.001	0.47%	0.91	5.0	5.17	466	-5.7%	-10.4%	15.2%	6.5%
Boursa Kuwait Securities Co	2.088	-0.012	-0.57%	7.19	22.3	3.10	419	0.4%	3.4%	33.9%	22.2%
Kuwait International Bank	0.195	-0.004	-2.01%	0.61	31.0	1.93	207	-1.5%	-7.0%	1.9%	0.4%
Jazeera Airways	1.732	-0.006	-0.35%	12.52	14.0	2.65	381	4.7%	34.3%	164.8%	12.1%
Alafco Aviation Lease and Finance	0.173	-0.001	-0.57%	0.64	NM	0.00	165	-0.6%	-20.6%	-15.9%	-3.4%
Mezzan Holding	0.364	-0.006	-1.62%	1.07	37.3	4.24	113	-2.7%	-37.0%	2.8%	1.3%
Gulf Cable and Electrical Industries	1.124	0.006	0.54%	1.04	10.4	5.37	234	5.0%	29.0%	11.0%	9.0%
National Investments	0.230	0.006	2.68%	0.91	8.6	20.09	184	-0.4%	5.0%	10.9%	8.9%
Alimtiazi Investment Group	0.074	-0.001	-0.94%	0.43	NM	12.13	75	-2.6%	-37.7%	-1.0%	-0.1%
Kuwait Real Estate	0.100	0.000	-0.20%	0.73	12.2	2.90	93	-0.6%	-42.2%	6.0%	2.5%
Integrated Holding	0.348	-0.002	-0.57%	1.44	26.6	2.86	88	-8.4%	-5.9%	5.4%	3.4%
LI ALGanim	0.790	0.008	1.02%	3.65	12.4	0.00	219	0.6%	nm	27.8%	10.9%
Total		-23.70	-0.30%	2.18	31.45	4.52	35,711	-1.5%	2.5%		



Premier Market	Price			Moving Average		RSI	MKT Cap	Price Performance		52 Week (KD)	
Discription	Close (KD)	Day Δ	Day % Δ	50 Day	200 Day	14 Day	Mn KD	MTD(%)	YTD (%)	High	Low
Premier Index	7,827	-23.70	-0.30%	8,403	8,422	31	35,711	-1.5%	2.5%	9,437	7,344

Top 5 Performrs (Today's Price Change)

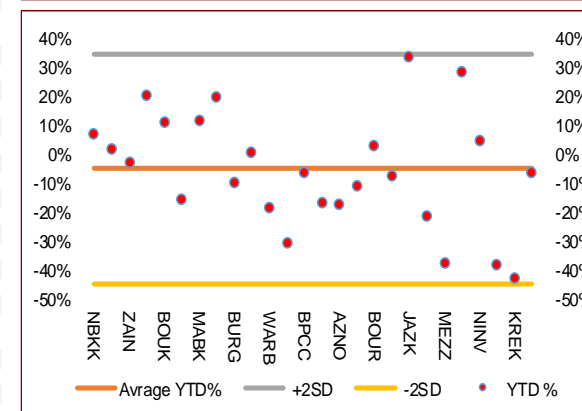
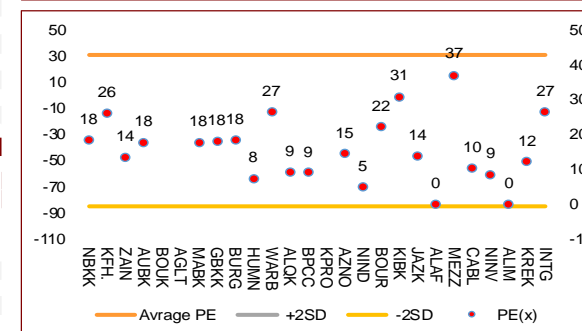
National Investments	0.230	0.006	2.68%	0.275	0.313	34	184	-0.4%	5.0%	0.475	0.196
Kuwait Projects Company Holding	0.119	0.002	1.71%	0.148	0.163	22	291	-10.5%	-16.2%	0.215	0.115
Gulf Bank	0.320	0.005	1.59%	0.337	0.317	45	1,013	6.7%	20.4%	0.385	0.226
Boubyan Petrochemical	0.805	0.005	0.63%	0.889	0.940	12	420	-3.0%	-5.5%	1.125	0.769
Gulf Cable and Electrical Industries	1.124	0.006	0.54%	1.345	1.315	36	234	5.0%	29.0%	1.850	0.835

Middel Performrs (Today's Price Change)

National Industries Group Holding	0.216	0.001	0.47%	0.259	0.260	21	466	-5.7%	-10.4%	0.314	0.205
Burgan Bank	0.217	0.001	0.46%	0.233	0.254	31	712	-2.3%	-9.2%	0.307	0.205
Warba Bank	0.224	0.001	0.45%	0.240	0.262	33	448	1.4%	-18.2%	0.298	0.216
National Bank of Kuwait	1.020	0.001	0.10%	1.040	1.030	47	7,703	4.7%	7.4%	1.104	0.898
Mobile Telecommunications	0.580	0.000	0.00%	0.600	0.611	48	2,510	-0.9%	-2.5%	0.698	0.564
Ahli United Bank BSC	0.305	0.000	0.00%	0.305	0.284	50	3,400	0.0%	20.7%	0.336	0.240
Kuwait Real Estate	0.100	0.000	-0.20%	0.119	0.149	28	93	-0.6%	-42.2%	0.187	0.097
Agility Public Warehousing	0.669	-0.002	-0.30%	0.795	0.858	32	1,690	0.4%	-15.0%	1.062	0.634
Shamal Az-Zour Al-Oula Power & Water	0.190	-0.001	-0.52%	0.199	0.214	21	209	-2.6%	-16.7%	0.247	0.189
Integrated Holding	0.348	-0.002	-0.57%	0.100	0.100	23	88	-8.4%	-5.9%	1.210	0.996
Boursa Kuwait Securities Co	2.088	-0.012	-0.57%	2.297	2.356	35	419	0.4%	3.4%	2.870	1.800
Alafco Aviation Lease and Finance	0.173	-0.001	-0.57%	0.189	0.206	32	165	-0.6%	-20.6%	0.256	0.167
Kuwait Finance House	0.772	-0.006	-0.77%	0.870	0.871	25	10,215	-8.0%	2.1%	1.039	0.720
Alimtiazi Investment Group	0.074	-0.001	-0.94%	0.087	0.110	28	75	-2.6%	-37.7%	0.140	0.069
Mabaneer Co.	0.840	-0.009	-1.06%	0.840	0.809	27	1,043	-2.7%	12.3%	0.910	0.715

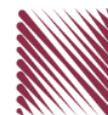
Bottom 5 Performrs (Today's Price Change)

Boubyan Bank	0.796	-0.009	-1.12%	0.819	0.802	45	2,976	4.3%	11.7%	0.965	0.681
Human Soft Holding	3.260	-0.037	-1.12%	3.356	3.311	44	397	-0.5%	1.1%	3.704	3.006
Mezzan Holding	0.364	-0.006	-1.62%	0.406	0.504	24	113	-2.7%	-37.0%	0.631	0.358
Kuwait International Bank	0.195	-0.004	-2.01%	0.210	0.220	31	207	-1.5%	-7.0%	0.259	0.192
Qurain Petrochemical Industries	0.242	-0.008	-3.20%	0.301	0.348	8	260	-10.7%	-30.3%	0.403	0.240



DAILY MARKET COVERAGE REPORT

NIC MENA SECURITIES - RESEARCH AND STUDIES DEP



Banking Sector	Price			Valuation Multiples			MKT Cap	Price Performance		Trading Indicators		ROE	ROA	52 Week (KD)		MKT Cap
	Company	Close (KD)	Day Δ	Day % Δ	PBV(X)	PE(X)		DY%	Mn KD	MTD(%)	YTD (%)			Value (Mn KD)	(Mn Shrs)	
National Bank of Kuwait	1.020	0.001	0.10%	1.98	18.44	2.38	7,703	4.7%	7.4%	4.07	3.99	10.9%	1.4%	1.104	0.898	17.25%
Kuwait Finance House	0.772	-0.006	-0.77%	3.31	26.21	1.40	10,215	-8.0%	2.1%	11.50	14.82	12.8%	1.6%	1.039	0.720	22.87%
Ahli United Bank BSC	0.305	0.000	0.00%	2.04	17.93	2.72	3,400	0.0%	20.7%	0.00	0.00	11.3%	1.6%	0.336	0.240	7.61%
Boubyan Bank	0.796	-0.009	-1.12%	3.21	52.47	0.56	2,976	4.3%	11.7%	0.51	0.63	6.7%	0.8%	0.965	0.681	6.66%
Commercial Bank of Kuwait	0.466	-0.021	-4.31%	1.10	11.62	4.11	923	-3.9%	-7.0%	0.00	0.00	9.9%	1.9%	0.549	0.456	2.07%
Gulf Bank	0.320	0.005	1.59%	1.50	18.11	2.12	1,013	6.7%	20.4%	4.80	15.15	8.5%	0.8%	0.385	0.226	2.27%
Burgan Bank	0.217	0.001	0.46%	0.80	18.37	2.20	712	-2.3%	-9.2%	0.18	0.81	4.3%	0.7%	0.307	0.205	1.59%
Ahli United Bank	0.258	0.000	0.00%	0.89	23.78	1.85	581	-1.1%	-12.3%	0.01	0.03	3.7%	0.7%	0.324	0.250	1.30%
Warba Bank	0.224	0.001	0.45%	1.22	26.54	0.00	448	1.4%	-18.2%	0.58	2.57	4.8%	0.6%	0.298	0.216	1.00%
Al Ahli Bank of Kuwait	0.278	0.000	0.00%	0.82	20.56	1.71	492	-5.8%	14.9%	0.01	0.02	4.0%	0.6%	0.355	0.215	1.10%
Kuwait International Bank	0.195	-0.004	-2.01%	0.61	31.00	1.93	207	-1.5%	-7.0%	0.50	2.56	1.9%	0.4%	0.259	0.192	0.46%
Total Banking Sector - 11 Companies							28,671			22.15	40.58					64.19%

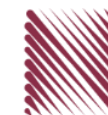
Basic Materials	Price			Valuation Multiples			MKT Cap	Price Performance		Trading Indicators		ROE	ROA	52 Week (KD)		MKT Cap
	Company	Close (KD)	Day Δ	Day % Δ	PBV(X)	PE(X)		DY%	Mn KD	MTD(%)	YTD (%)			Value (Mn KD)	(Mn Shrs)	
Qurain Petrochemical Industries	0.242	-0.008	-3.20%	0.60	9.26	7.20	260	-10.70%	-30.26%	0.04	0.18	6.4%	5.2%	0.403	0.240	0.58%
Boubyan Petrochemical	0.805	0.005	0.63%	1.65	9.11	7.50	420	-3.01%	-5.52%	0.12	0.14	19.1%	10.1%	1.125	0.769	0.94%
Al Kout Industrial Projects	0.390	0.000	0.00%	1.40	4.93	10.26	39	-3.94%	-21.37%	0.00	0.00	30.5%	20.1%	0.545	0.390	0.09%
Kuwait Foundry	0.296	0.000	0.00%	1.23	12.61	0.00	21	2.07%	-19.78%	0.00	0.00	10.7%	10.3%	0.424	0.260	0.05%
Total Basic Materials - 4 Companies							740			0.16	0.33					1.66%

Consumer Goods	Price			Valuation Multiples			MKT Cap	Price Performance		Trading Indicators		ROE	ROA	52 Week (KD)		MKT Cap
	Company	Close (KD)	Day Δ	Day % Δ	PBV(X)	PE(X)		DY%	Mn KD	MTD(%)	YTD (%)			Value (Mn KD)	(Mn Shrs)	
Mezzan Holding	0.364	-0.006	-1.62%	1.07	37.30	4.24	113	-2.7%	-37.0%	0.42	1.14	2.8%	1.3%	0.631	0.358	0.25%
Livestock Transport and Trading	0.118	-0.001	-0.84%	0.73	NM	0.00	25	-1.7%	-35.2%	0.01	0.05	-14.5%	-8.2%	0.196	0.114	0.06%
Total Consumer Goods - 2 Companies							138			0.43	1.19					0.31%

Consumer Services	Price			Valuation Multiples			MKT Cap	Price Performance		Trading Indicators		ROE	ROA	52 Week (KD)		MKT Cap
	Company	Close (KD)	Day Δ	Day % Δ	PBV(X)	PE(X)		DY%	Mn KD	MTD(%)	YTD (%)			Value (Mn KD)	(Mn Shrs)	
Jazeera Airways	1.732	-0.006	-0.35%	12.52	14.00	2.65	381	4.7%	34.3%	0.28	0.16	164.8%	12.1%	2.099	0.860	0.85%
Kuwait National Cinema	0.885	0.000	0.00%	1.08	8.62	3.39	82	-0.6%	0.3%	0.00	0.00	13.3%	6.1%	0.933	0.815	0.18%
Oula Fuel Marketing	0.145	0.001	0.69%	0.90	15.64	3.47	59	0.0%	-7.1%	0.00	0.02	5.6%	2.9%	0.178	0.140	0.13%
Al Soor Fuel Marketing	0.149	0.004	2.76%	0.88	19.01	3.45	60	-0.7%	-3.9%	0.00	0.02	4.8%	3.6%	0.175	0.142	0.13%
Sultan Center Food Products	0.106	0.000	0.00%	0.61	0.85	0.00	30	-7.8%	-49.5%	0.01	0.07	74.2%	12.2%	0.269	0.103	0.07%
Jiyad Holding	0.024	0.000	0.42%	0.27	NM	0.00	4	-11.2%	-70.6%	0.14	6.07	-16.2%	-10.9%	0.099	0.015	0.01%
IFA Hotels and Resorts	0.027	0.000	0.00%	3.55	179.33	0.00	17	-2.9%	-49.7%	0.08	2.95	2.0%	0.4%	0.073	0.025	0.04%
Kuwait Resorts	0.076	-0.001	-1.05%	0.49	10.63	3.85	15	-2.7%	-21.7%	0.00	0.06	4.8%	4.2%	0.110	0.067	0.03%
Future Kid Entertainment and Real Estate	0.110	0.002	1.85%	0.95	9.62	0.00	12	0.9%	39.8%	0.00	0.03	10.4%	4.7%	0.130	0.074	0.03%
Al Eid Food	0.222	0.002	0.91%	1.75	13.50	3.11	38	0.5%	-3.8%	0.05	0.21	13.5%	10.1%	0.304	0.207	0.08%
Kuwait Hotels	0.170	0.000	0.00%	2.13	19.68	2.94	10	-7.6%	142.9%	0.00	0.00	11.1%	7.4%	0.201	0.070	0.02%
Palms Agro Production	0.077	0.000	0.00%	0.78	NM	0.00	4	0.0%	12.3%	0.00	0.00	-13.8%	-10.9%	0.090	0.043	0.01%
ALI ALGanim	0.790	0.008	1.02%	3.65	12.39	0.00	219	0.6%	nm	0.86	1.09	27.8%	10.9%	0.966	0.750	0.49%
Total Consumer Services - 13 Companies							930			1.43	10.67					2.08%

DAILY MARKET COVERAGE REPORT

NIC MENA SECURITIES - RESEARCH AND STUDIES DEP



Financial Services	Price			Valuation Multiples			MKT Cap	Price Performance		Trading Indicators		ROE	ROA	52 Week (KD)		MKT Cap
	Company	Close (KD)	Day Δ	Day % Δ	PBV(X)	PE(X)		DY%	Mn KD	MTD (%)	YTD (%)			Value (Mn KD)	(Mn Shrs)	
Egypt Kuwait Holding	0.387	0.007	1.84%	2.19	5.93	5.62	436	0.8%	-8.7%	0.02	0.04	37.1%	17.5%	0.465	0.353	0.98%
Kuwait Projects Company Holding	0.119	0.002	1.71%	0.63	305.13	4.27	291	-10.5%	-16.2%	0.11	0.90	0.2%	0.1%	0.215	0.115	0.65%
National Industries Group Holding	0.216	0.001	0.47%	0.91	4.97	5.17	466	-5.7%	-10.4%	0.44	2.02	15.2%	6.5%	0.314	0.205	1.04%
Boursa Kuwait Securities Co	2.088	-0.012	-0.57%	7.19	22.33	3.10	419	0.4%	3.4%	0.46	0.22	33.9%	22.2%	2.870	1.800	0.94%
GFH Financial Group	0.074	-0.001	-1.87%	0.89	9.55	4.85	256	-5.4%	-25.2%	0.50	6.74	9.3%	1.2%	0.109	0.066	0.57%
National Investments	0.230	0.006	2.68%	0.91	8.60	20.09	184	-0.4%	5.0%	0.63	2.76	10.9%	8.9%	0.475	0.196	0.41%
Tamdeen Investment	0.500	0.000	0.00%	0.58	12.93	2.00	170	5.3%	31.9%	0.05	0.10	4.9%	3.8%	0.530	0.309	0.38%
Alimtiq Investment Group	0.074	-0.001	-0.94%	0.43	NM	12.13	75	-2.6%	-37.7%	0.01	0.12	-1.0%	-0.1%	0.140	0.069	0.17%
Commercial Facilities	0.172	0.000	0.00%	0.55	6.37	8.72	87	0.0%	-16.5%	0.01	0.04	8.8%	5.0%	0.228	0.165	0.20%
Aayan Leasing and Investment	0.108	0.001	0.93%	0.82	11.08	0.00	72	-3.6%	-34.7%	0.36	3.34	7.7%	5.8%	0.204	0.104	0.16%
Kuwait Investment	0.124	0.000	0.00%	0.60	7.19	20.16	68	-3.9%	-55.9%	0.07	0.60	8.1%	4.6%	0.317	0.113	0.15%
Noor Financial Investment	0.175	-0.001	-0.57%	1.08	4.89	2.73	89	-2.8%	-31.2%	0.00	0.02	22.7%	16.0%	0.319	0.163	0.20%
Arzan Financial Group for Financing and Investmei	0.116	-0.001	-0.85%	0.78	7.28	2.06	93	-4.1%	-25.4%	0.02	0.19	11.3%	8.2%	0.180	0.109	0.21%
Kuwait Financial Centre	0.108	-0.003	-2.70%	0.53	8.17	8.58	54	-10.0%	-37.3%	0.01	0.07	6.9%	4.0%	0.197	0.101	0.12%
Gulf Investment House	0.403	0.004	1.00%	3.84	NM	0.00	164	-1.2%	34.3%	0.06	0.14	-3.0%	-2.0%	0.422	0.217	0.37%
Arabi Group Holdings	0.248	-0.001	-0.40%	1.48	NM	0.00	41	-7.8%	-14.8%	0.00	0.01	-29.0%	-4.0%	0.499	0.142	0.09%
Kuwait and Middle East Financial Investment	0.110	0.000	0.00%	0.95	12.81	6.36	24	-4.3%	-26.7%	0.00	0.00	7.5%	5.2%	0.175	0.105	0.05%
Privatization Holding	0.034	0.000	0.89%	0.28	NM	0.00	21	-5.8%	-38.1%	0.02	0.57	-7.1%	-5.5%	0.070	0.032	0.05%
Asiya Capital Investments	0.038	0.000	0.00%	0.35	2.12	0.00	30	-4.5%	-26.2%	0.03	0.69	17.9%	17.6%	0.071	0.038	0.07%
Umm Al Qaiwain General Investment Co	0.093	0.000	0.00%	0.57	4.97	5.38	34	0.0%	6.7%	0.00	0.00	12.0%	10.0%	0.108	0.077	0.08%
Securities House	0.056	0.000	-0.71%	0.56	9.54	0.00	24	-2.3%	-43.5%	0.04	0.72	5.8%	5.0%	0.115	0.052	0.05%
Kamco Investment	0.096	0.002	2.13%	0.53	3.80	10.64	33	-2.9%	-25.6%	0.02	0.18	14.5%	6.9%	0.167	0.089	0.07%
First Investment	0.075	-0.001	-0.92%	0.66	107.14	0.00	33	4.7%	-10.9%	0.16	2.08	0.6%	0.7%	0.104	0.068	0.07%
Inovest BSC Public	0.076	0.002	2.15%	0.00	NM	0.00	23	-3.1%	-35.7%	0.03	0.42	2.7%	1.7%	0.189	0.070	0.05%
Coast Investment and Development	0.075	0.000	0.00%	0.74	10.26	6.67	35	-5.7%	-28.6%	0.01	0.15	7.2%	6.8%	0.126	0.066	0.08%
Al Madar Investment	0.101	0.000	0.00%	0.95	59.06	0.00	21	0.7%	-15.1%	0.00	0.00	1.6%	1.7%	0.128	0.083	0.05%
Bayan Investment	0.035	0.000	0.00%	0.31	NM	0.00	13	0.0%	-28.8%	0.00	0.00	-0.5%	-0.6%	0.060	0.031	0.03%
Al Manar Financing and Leasing	0.056	0.000	0.00%	0.55	18.24	0.00	15	6.1%	-10.2%	0.00	0.00	2.9%	2.3%	0.079	0.049	0.03%
Manazel Holding	0.027	0.001	2.66%	0.59	9.25	0.00	12	-4.9%	-47.3%	0.00	0.16	6.2%	2.0%	0.060	0.025	0.03%
Kuwait Finance and Investment	0.066	0.000	0.00%	0.49	28.70	0.00	20	3.1%	-24.0%	0.00	0.00	1.7%	1.6%	0.104	0.057	0.05%
National International Holding	0.097	0.001	1.15%	0.56	7.24	5.06	21	-10.2%	-34.3%	0.02	0.22	7.6%	5.3%	0.168	0.091	0.05%
Osoul Investment	0.077	0.001	0.92%	0.70	NM	13.88	10	6.4%	-5.8%	0.00	0.01	-4.4%	-4.0%	0.118	0.062	0.02%
UniCap Investment and Finance	0.053	0.003	4.95%	0.59	62.35	0.00	12	-8.1%	-22.6%	0.00	0.02	1.9%	0.2%	0.097	0.050	0.03%
Amar Finance and Leasing	0.064	0.000	0.00%	0.59	3.45	0.00	12	0.0%	-2.7%	0.00	0.00	18.6%	17.3%	0.097	0.058	0.03%
Gulf North Africa Holding	0.134	-0.005	-3.60%	1.72	59.40	0.00	20	-0.7%	55.6%	0.20	1.46	3.0%	2.4%	0.141	0.057	0.04%
International Financial Advisors	0.090	0.000	0.00%	0.58	36.06	0.00	22	-0.8%	-20.5%	0.00	0.02	1.9%	0.7%	0.129	0.082	0.05%
Credit Rating and Collection	0.015	-0.001	-5.00%	0.52	NM	0.00	3	-11.6%	-62.2%	0.00	0.00	-0.4%	-0.3%	0.069	0.014	0.01%
Ekttitab Holding	0.011	0.000	2.91%	0.34	NM	0.00	3	-3.6%	-50.2%	0.00	0.30	-16.8%	-12.9%	0.024	0.009	0.01%
Kuwait Syrian Holding Co	0.035	0.000	0.00%	0.34	5.65	0.00	6	-5.4%	-18.2%	0.00	0.00	8.7%	6.2%	0.060	0.026	0.01%
Warba Capital Holding	0.098	0.000	0.00%	1.09	NM	0.00	10	0.0%	14.0%	0.00	0.00	-0.8%	-0.7%	0.128	0.070	0.02%
National Consumer Holding	0.106	-0.001	-0.93%	4.80	NM	0.00	32	-5.4%	-11.6%	0.54	5.11	-8.0%	-7.5%	0.186	0.097	0.07%
Al Deera Holding	0.173	0.006	3.59%	1.16	8.72	0.00	16	3.6%	-13.5%	0.00	0.00	12.5%	6.5%	0.200	0.145	0.04%
AL Safat Investment	0.096	-0.005	-4.96%	1.22	NM	0.00	27	-14.5%	-21.4%	0.52	5.27	-1.8%	-1.6%	0.270	0.094	0.06%
Gulf Franchising Holding	0.081	0.000	0.00%	1.59	NM	0.00	3	-2.3%	-15.5%	0.00	0.00	-5.7%	-1.6%	0.148	0.051	0.01%
Total Financial Services - 44 Companies							3,499			4.33	34.70					7.83%

DAILY MARKET COVERAGE REPORT

NIC MENA SECURITIES - RESEARCH AND STUDIES DEP



Health Care	Price			Valuation Multiples			MKT Cap	Price Performance		Trading Indicators		ROE	ROA	52 Week (KD)		MKT Cap
	Company	Close (KD)	Day Δ	Day % Δ	PBV(X)	PE(X)		DY%	Mn KD	MTD(%)	YTD (%)			Value (Mn KD)	(Mn Shrs)	
Al-Maidan Clinic for Oral Health Services	0.632	0.000	0.00%	2.51	13.90	0.00	142	0.0%	-54.1%	0.00	0.00	19.4%	12.5%	1.400	0.556	0.32%
Advanced Technology	0.520	0.000	0.00%	1.16	11.23	2.88	78	0.0%	0.4%	0.00	0.00	10.7%	2.1%	0.595	0.450	0.17%
Yiaco Medical	0.450	0.000	0.00%	43.51	NM	0.00	8	0.0%	2.7%	0.00	0.00	-161.7%	-4.7%	0.480	0.399	0.02%
Total Health Care - 3 Companies							228			0.00	0.00					0.51%

Industrials	Price			Valuation Multiples			MKT Cap	Price Performance		Trading Indicators		ROE	ROA	52 Week (KD)		MKT Cap
	Company	Close (KD)	Day Δ	Day % Δ	PBV(X)	PE(X)		DY%	Mn KD	MTD(%)	YTD (%)			Value (Mn KD)	(Mn Shrs)	
Agility Public Warehousing	0.669	-0.002	-0.30%	1.14	51.38	2.48	1,690	0.4%	-15.0%	3.93	5.82	2.7%	2.2%	1.062	0.634	3.78%
Human Soft Holding	3.260	-0.037	-1.12%	3.60	7.53	12.13	397	-0.5%	1.1%	0.60	0.18	48.7%	39.9%	3.704	3.006	0.89%
Alafco Aviation Lease and Finance	0.173	-0.001	-0.57%	0.64	NM	0.00	165	-0.6%	-20.6%	0.13	0.77	-15.9%	-3.4%	0.256	0.167	0.37%
Kuwait Cement	0.199	-0.002	-1.00%	0.73	NM	2.49	142	-3.9%	-13.9%	0.01	0.07	-1.1%	-0.7%	0.295	0.198	0.32%
Gulf Cable and Electrical Industries	1.124	0.006	0.54%	1.04	10.42	5.37	234	5.0%	29.0%	0.15	0.13	11.0%	9.0%	1.850	0.835	0.52%
Integrated Holding	0.348	-0.002	-0.57%	1.44	26.61	2.86	88	-8.4%	-5.9%	0.25	0.71	5.4%	3.4%	0.478	0.342	0.20%
Kuwait Portland Cement	0.818	0.004	0.49%	1.15	17.11	8.60	82	0.5%	-16.5%	0.00	0.00	6.8%	5.3%	1.240	0.751	0.18%
Educational Holding Group	2.462	-0.488	-16.54%	4.18	9.35	18.06	52	-17.9%	-38.5%	0.09	0.04	30.0%	17.2%	5.073	2.462	0.12%
United Projects for Aviation Services	0.209	0.005	2.45%	0.76	74.64	0.00	79	-5.4%	-15.7%	0.00	0.01	1.0%	0.6%	0.318	0.182	0.18%
Heavy Engineering Industries and Shipbuilding	0.640	-0.001	-0.16%	1.72	21.14	3.12	115	-0.6%	25.7%	0.12	0.18	8.2%	3.2%	0.960	0.442	0.26%
National Industries	0.200	0.010	5.26%	0.80	11.66	5.26	70	10.5%	3.6%	0.00	0.00	6.8%	5.1%	0.260	0.181	0.16%
ACICO Industries	0.083	0.001	1.10%	0.37	NM	0.00	27	-5.8%	-40.4%	0.04	0.51	-1.9%	-0.5%	0.208	0.076	0.06%
Kuwait Company for Process Plant Construction a	0.306	0.006	2.00%	1.23	19.83	8.25	36	1.7%	-35.5%	0.01	0.03	6.1%	3.5%	0.522	0.286	0.08%
Ras Al Khaimah for White Cement and Constructi	0.138	0.000	0.00%	1.19	26.67	6.01	69	-6.1%	9.5%	0.01	0.08	4.6%	3.7%	0.175	0.090	0.15%
Combined Group Contracting	0.384	0.007	1.86%	1.43	5.89	6.63	66	-3.8%	8.5%	0.02	0.07	26.3%	5.8%	0.500	0.308	0.15%
Kuwait and Gulf Link Transport	0.057	-0.001	-2.06%	0.34	3.08	0.00	16	0.9%	-16.4%	0.00	0.07	11.6%	2.6%	0.106	0.052	0.04%
Shuaiba Industrial	0.148	-0.005	-3.27%	0.82	12.31	7.84	15	-8.6%	-34.2%	0.00	0.00	6.6%	5.4%	0.310	0.137	0.03%
National Cleaning	0.037	0.000	0.00%	0.29	NM	0.00	9	9.1%	-35.0%	0.00	0.00	-13.9%	-4.1%	0.080	0.031	0.02%
Fujairah Cement Industries	0.039	0.002	4.00%	0.19	NM	0.00	14	-1.3%	-27.8%	0.00	0.00	-12.7%	-6.3%	0.069	0.028	0.03%
Mubarrad Holding	0.073	-0.002	-2.54%	0.57	6.18	6.68	12	-5.1%	-33.6%	0.00	0.04	9.3%	8.2%	0.130	0.071	0.03%
Specialities Group Holding	0.086	0.002	2.62%	0.46	9.37	8.09	14	2.6%	-30.6%	0.00	0.00	5.0%	3.6%	0.157	0.076	0.03%
Salbookh Trading	0.017	-0.001	-7.61%	0.51	NM	0.00	2	-9.6%	-60.8%	0.00	0.01	-51.7%	-28.6%	0.072	0.016	0.00%
Metal and Recycling	0.067	0.003	4.84%	0.87	NM	0.00	6	-9.3%	-29.4%	0.00	0.00	-12.0%	-2.0%	0.136	0.061	0.01%
Equipment Holding	0.033	0.002	5.16%	0.52	NM	0.00	3	-4.1%	-40.2%	0.00	0.00	-11.1%	-3.2%	0.079	0.030	0.01%
Jassim Transport & Stevedoring	0.329	0.000	0.00%	1.11	14.35	4.86	49	0.0%	-19.2%	0.01	0.12	8.0%	6.3%	0.450	0.307	0.11%
Total Industrials - 24 Companies							3,450			5.39	8.85					7.72%

DAILY MARKET COVERAGE REPORT

NIC MENA SECURITIES - RESEARCH AND STUDIES DEP



Insurance	Price			Valuation Multiples			MKT Cap	Price Performance		Trading Indicators		ROE	ROA	52 Week (KD)		MKT Cap
Company	Close (KD)	Day Δ	Day % Δ	PBV(X)	PE(X)	DY%	Mn KD	MTD(%)	YTD (%)	Value (Mn KD)	(Mn Shrs)	(%)	(%)	High	Low	%
Gulf Insurance Group	1.015	0.000	0.00%	1.18	4.35	10.44	288	2.0%	-5.1%	0.00	0.00	28.6%	5.5%	1.200	0.867	0.64%
Al Ahleia Insurance	0.563	0.000	0.00%	0.94	7.77	6.22	122	18.3%	11.5%	0.00	0.00	12.5%	4.4%	0.612	0.453	0.27%
Kuwait Insurance	0.480	0.000	0.00%	0.72	7.44	6.88	89	6.7%	24.0%	0.00	0.00	10.4%	6.1%	0.497	0.379	0.20%
Kuwait Reinsurance	0.295	0.000	0.00%	1.07	10.42	1.55	70	0.0%	16.9%	0.00	0.00	10.8%	3.4%	0.373	0.217	0.16%
Bahrain Kuwait Insurance	0.191	0.000	0.00%	1.33	11.98	8.44	29	0.0%	0.0%	0.00	0.00	11.0%	2.1%	0.191	0.191	0.06%
Warba Insurance and Reinsurance	0.123	-0.006	-4.65%	0.53	8.55	7.75	21	-4.7%	-22.6%	0.01	0.09	6.2%	2.1%	0.176	0.119	0.05%
First Takaful Insurance	0.048	0.000	0.00%	0.63	296.88	0.00	5	0.0%	-5.0%	0.00	0.00	0.2%	0.1%	0.081	0.034	0.01%
Wethaq Takaful Insurance	0.037	0.000	0.00%	0.33	19.37	0.00	4	3.6%	-27.3%	0.00	0.00	1.7%	1.7%	0.102	0.024	0.01%
Total Insurance - 8 Companies							627			0.01	0.09					1.40%

Energy	Price			Valuation Multiples			MKT Cap	Price Performance		Trading Indicators		ROE	ROA	52 Week (KD)		MKT Cap
Company	Close (KD)	Day Δ	Day % Δ	PBV(X)	PE(X)	DY%	Mn KD	MTD(%)	YTD (%)	Value (Mn KD)	(Mn Shrs)	(%)	(%)	High	Low	%
National Petroleum Services	0.728	-0.038	-4.96%	1.84	13.05	4.57	71	-2.9%	-11.2%	0.00	0.00	14.5%	11.6%	0.880	0.625	0.16%
Independent Petroleum Group	0.430	0.000	0.00%	0.79	14.40	6.98	78	-9.1%	-26.9%	0.00	0.00	5.5%	1.0%	0.614	0.368	0.17%
Burgan for Well Drilling Trading and Maintenance	0.116	-0.001	-0.85%	0.40	9.11	2.49	28	0.9%	-18.9%	0.03	0.24	4.4%	1.4%	0.172	0.100	0.06%
Energy House Holding	0.020	0.000	-1.46%	0.73	NM	0.00	15	5.2%	-68.0%	0.00	0.01	-1.4%	-2.5%	0.086	0.019	0.03%
Gulf Petroleum Investment	0.016	0.000	1.29%	0.22	NM	0.00	7	-3.1%	-35.9%	0.00	0.19	-4.0%	-2.6%	0.031	0.013	0.02%
Senergy Holding	0.040	0.000	0.50%	0.80	47.50	0.00	8	-0.2%	-18.6%	0.00	0.00	1.7%	1.4%	0.063	0.036	0.02%
Total Energy - 6 Companies							207			0.03	0.44					0.46%

DAILY MARKET COVERAGE REPORT

NIC MENA SECURITIES - RESEARCH AND STUDIES DEP



Real Estate	Price		Valuation Multiples				MKT Cap	Performance		Trading Indicators		ROE	ROA	2 Week (KD)		MKT Cap
Company	Close (KD)	Day Δ	Day % Δ	PBV(X)	PE(X)	DY%	Mn KD	MTD(%)	YTD (%)	Value (Mn KD)	(Mn Shrs)	(%)	(%)	High	Low	%
Mabaneer Co.	0.840	-0.009	-1.06%	1.92	17.77	1.56	1,043	-2.7%	12.3%	0.53	0.63	11.2%	5.4%	0.910	0.715	2.34%
Salhia Real Estate	0.450	-0.011	-2.39%	1.49	19.23	3.10	232	0.9%	-10.7%	0.38	0.84	7.9%	3.2%	0.578	0.428	0.52%
Commercial Real Estate	0.100	0.001	0.81%	0.61	10.25	5.06	175	0.6%	-20.2%	0.62	6.20	6.2%	3.3%	0.140	0.094	0.39%
National Real Estate	0.132	-0.002	-1.49%	0.74	1.19	0.00	245	-1.5%	-28.3%	0.17	1.25	64.5%	38.6%	0.212	0.125	0.55%
Tamdeen Real Estate	0.300	-0.008	-2.60%	0.58	6.91	3.25	120	-7.7%	-11.5%	0.00	0.00	9.2%	3.9%	0.375	0.296	0.27%
Kuwait Real Estate	0.100	0.000	-0.20%	0.73	12.23	2.90	93	-0.6%	-42.2%	0.61	6.06	6.0%	2.5%	0.187	0.097	0.21%
United Real Estate	0.075	0.000	0.27%	0.47	234.06	0.00	80	-3.6%	-0.7%	0.00	0.00	0.2%	-0.1%	0.121	0.064	0.18%
First Dubai for Real Estate Development	0.046	0.000	-0.66%	0.44	30.54	0.00	33	-0.9%	-56.7%	0.00	0.03	1.5%	1.2%	0.120	0.044	0.07%
Al Mazaya Holding	0.045	-0.001	-1.75%	0.46	40.82	0.00	28	-4.5%	-41.3%	0.02	0.40	1.1%	0.6%	0.089	0.043	0.06%
Ajial Real Estate Entertainment	0.282	0.000	0.00%	0.42	17.40	1.77	55	2.5%	-7.2%	0.00	0.00	2.4%	2.0%	0.345	0.268	0.12%
Injazzat Real Estate Development	0.076	-0.003	-3.31%	0.46	6.46	6.36	26	-9.5%	-24.0%	0.03	0.37	7.0%	3.6%	0.114	0.070	0.06%
Munshaat Real Estate Projects	0.061	0.000	0.00%	1.87	11.46	0.00	20	-13.4%	-15.2%	0.00	0.00	17.4%	1.5%	0.081	0.052	0.04%
Aayan Real Estate	0.062	0.000	0.49%	0.44	59.62	0.00	26	1.1%	-29.9%	0.02	0.28	0.7%	1.4%	0.105	0.056	0.06%
Al Argan International Real Estate	0.085	-0.003	-2.86%	0.28	31.14	0.00	22	11.8%	-27.4%	0.01	0.09	0.9%	0.3%	0.144	0.073	0.05%
Al-Enmaa Real Estate	0.057	-0.006	-9.44%	0.62	NM	0.00	26	-16.6%	-24.0%	0.09	1.52	-5.9%	NM	0.091	0.056	0.06%
Arkan Al Kuwait Real Estate	0.125	0.000	0.00%	0.88	12.18	4.80	31	2.5%	0.8%	0.00	0.00	7.4%	2.3%	0.152	0.113	0.07%
Kuwait Business Town Real Estate	0.051	0.001	2.62%	0.64	14.21	0.00	29	2.6%	-37.3%	0.08	1.55	3.8%	2.8%	0.100	0.046	0.07%
Dalqan Real Estate	0.212	-0.003	-1.40%	1.90	196.30	0.00	13	-0.9%	-2.3%	0.02	0.11	1.0%	1.0%	0.280	0.195	0.03%
Sokouk Holding	0.025	0.000	-0.81%	0.57	NM	0.00	14	-8.9%	-24.8%	0.00	0.00	-2.9%	-1.7%	0.038	0.020	0.03%
Tijara and Realestate Investment	0.048	0.000	-0.21%	0.43	7.30	6.28	18	0.4%	-21.9%	0.01	0.25	6.0%	3.2%	0.089	0.044	0.04%
Al-Arabiya Real Estate	0.031	0.000	-0.32%	0.38	NM	0.00	16	3.3%	-25.1%	0.00	0.03	-23.1%	-7.3%	0.052	0.026	0.04%
Aqar Real Estate Investments	0.059	0.000	0.00%	0.49	18.91	5.63	14	0.5%	-24.9%	0.00	0.00	2.6%	2.1%	0.098	0.052	0.03%
Mashaer Holding	0.052	-0.002	-3.70%	0.62	NM	0.00	9	-2.3%	-25.6%	0.00	0.01	-6.5%	-3.2%	0.086	0.049	0.02%
Dar Al Thuraya Real Estate	0.170	0.000	0.00%	1.47	25.07	0.00	25	0.0%	61.9%	0.00	0.00	6.0%	5.3%	0.172	0.092	0.06%
Osos Holding Group	0.105	0.000	0.00%	0.92	8.36	9.52	11	8.2%	0.0%	0.00	0.00	11.2%	7.1%	0.147	0.094	0.02%
Al Massaleh Real Estate	0.033	-0.007	-17.54%	0.54	NM	0.00	8	-20.9%	-36.9%	0.02	0.63	-15.4%	-3.2%	0.060	0.031	0.02%
Kuwait Remal Real Estate	0.011	-0.001	-4.27%	1.44	NM	0.00	3	-1.8%	-41.4%	0.00	0.07	-110.3%	-12.4%	0.024	0.010	0.01%
Kuwait Real Estate Holding	0.036	0.003	9.70%	0.68	13.12	0.00	7	-2.2%	-31.4%	0.00	0.00	5.1%	1.7%	0.059	0.032	0.02%
Taameer Real Estate Investment	0.020	0.000	0.50%	0.32	NM	0.00	4	-2.4%	-51.6%	0.00	0.03	-6.5%	-4.9%	0.054	0.018	0.01%
Sanam Real Estate	0.064	0.006	9.40%	0.84	28.57	0.00	8	7.6%	-18.9%	0.00	0.00	2.9%	2.8%	0.100	0.053	0.02%
Mena Real Estate	0.033	0.001	4.14%	0.29	NM	0.00	4	-0.6%	-34.6%	0.03	0.80	-6.8%	-5.4%	0.105	0.030	0.01%
Al Masaken International Real Estate Developmen	0.031	0.001	2.67%	0.50	NM	0.00	3	9.2%	-29.8%	0.00	0.00	-1.1%	-0.4%	0.069	0.028	0.01%
Real Estate Trade Centers	0.049	0.002	3.13%	0.28	20.67	0.00	7	-13.2%	-29.4%	0.00	0.04	1.3%	1.1%	0.123	0.043	0.02%
Land United Real Estate	0.068	0.000	0.00%	0.60	NM	0.00	10	0.0%	-27.6%	0.00	0.00	-4.8%	-1.5%	0.144	0.052	0.02%
Total Real Estate - 34 Companies							2,458			2.63	21.20					5.50%

DAILY MARKET COVERAGE REPORT

NIC MENA SECURITIES - RESEARCH AND STUDIES DEP



	Close (KD)	Day Δ	Day % Δ	PBV(X)	PE(X)	DY%	Mn KD	MTD(%)	YTD (%)	Value (Mn KD)	(Mn Shrs)	(%)	(%)	High	Low	%
Automated Systems	0.078	0.004	5.26%	0.69	NM	0.00	8	-3.7%	-17.0%	0.00	0.06	-3.4%	-3.0%	0.116	0.074	0.02%
Total Technology - 1 Companies				0.69	NM	0.0%	8			0.00	0.06	-3.40%	-2.96%			0.02%

Telecom	Price			Valuation Multiples			MKT Cap	Price Performance		Trading Indicators		ROE	ROA	52 Week (KD)		MKT Cap
Company	Close (KD)	Day Δ	Day % Δ	PBV(X)	PE(X)	DY%	Mn KD	MTD(%)	YTD (%)	Value (Mn KD)	(Mn Shrs)	(%)	(%)	High	Low	%
Mobile Telecommunications	0.580	0.000	0.00%	2.11	13.71	5.69	2,510	-0.9%	-2.5%	1.22	2.10	15.6%	4.3%	0.698	0.564	5.62%
Kuwait Telecommunications	0.557	-0.001	-0.18%	2.50	12.81	5.38	556	0.2%	30.3%	0.01	0.02	20.1%	10.9%	1.189	0.418	1.25%
National Mobile Telecommunications	0.830	-0.007	-0.84%	0.79	12.57	4.18	416	-7.1%	33.0%	0.06	0.08	6.2%	3.6%	1.280	0.615	0.93%
AAN Digital Services	0.016	0.000	0.00%	0.60	NM	0.00	14	0.0%	-2.4%	0.00	0.00	NM	NM	0.020	0.016	0.03%
Hayat Communications	0.064	0.005	8.47%	0.51	NM	0.00	6	3.2%	-39.6%	0.00	0.03	-0.7%	-0.3%	0.124	0.052	0.01%
Telecom - 5 Companies							3,501			1.30	2.23					7.84%

Utilities	Price			Valuation Multiples			MKT Cap	Price Performance		Trading Indicators		ROE	ROA	52 Week (KD)		MKT Cap
Company	Close (KD)	Day Δ	Day % Δ	PBV(X)	PE(X)	DY%	Mn KD	MTD(%)	YTD (%)	Value (Mn KD)	(Mn Shrs)	(%)	(%)	High	Low	%
Shamal Az-Zour Al-Oula Power & Water	0.190	-0.001	-0.52%	2.14	14.55	9.42	209	-2.6%	-16.7%	0.07	0.37	19.1%	2.9%	0.247	0.189	0.47%
Total Utilities - 1 Companies							209			0.07	0.37					0.47%

Total Market 157 Companies				1.98	30.57	4.11	44,667			37.91	120.59					100%
-----------------------------------	--	--	--	-------------	--------------	-------------	---------------	--	--	--------------	---------------	--	--	--	--	-------------

End of Report

The information contained in this document is proprietary to NIC and is for use only by the persons to whom it is issued. This document is confidential and may not be distributed either in part or in whole without the express agreement of NIC. It is intended solely for the use of the individual or entity to whom it is addressed and others authorized to receive it.

Note : ROE and ROA is calculated based on LFY net profit & shareholders' equity and LFY Operating Profits & Total Assets

Sources : National Investments Company Research and Studies Departments, Boursa, Refinitiv.



شركة الاستثمار الوطنية
NATIONAL INVESTMENTS COMPANY

Sharq, Al Mutanabi Street, Khaleejia Tower | P.O. Box 25667, Safat 13117, Kuwait

T.: +965 2226 6666 | Fax: +965 2226 6793 | www.nic.com.kw